

LOHMAN MINING & COMMERCIAL CO.

COFFEE CREEK

1997 DRILLING SITES ON
MS 1875... 19 DRILL HOLES.
APMA... F979367
COE... B-970047

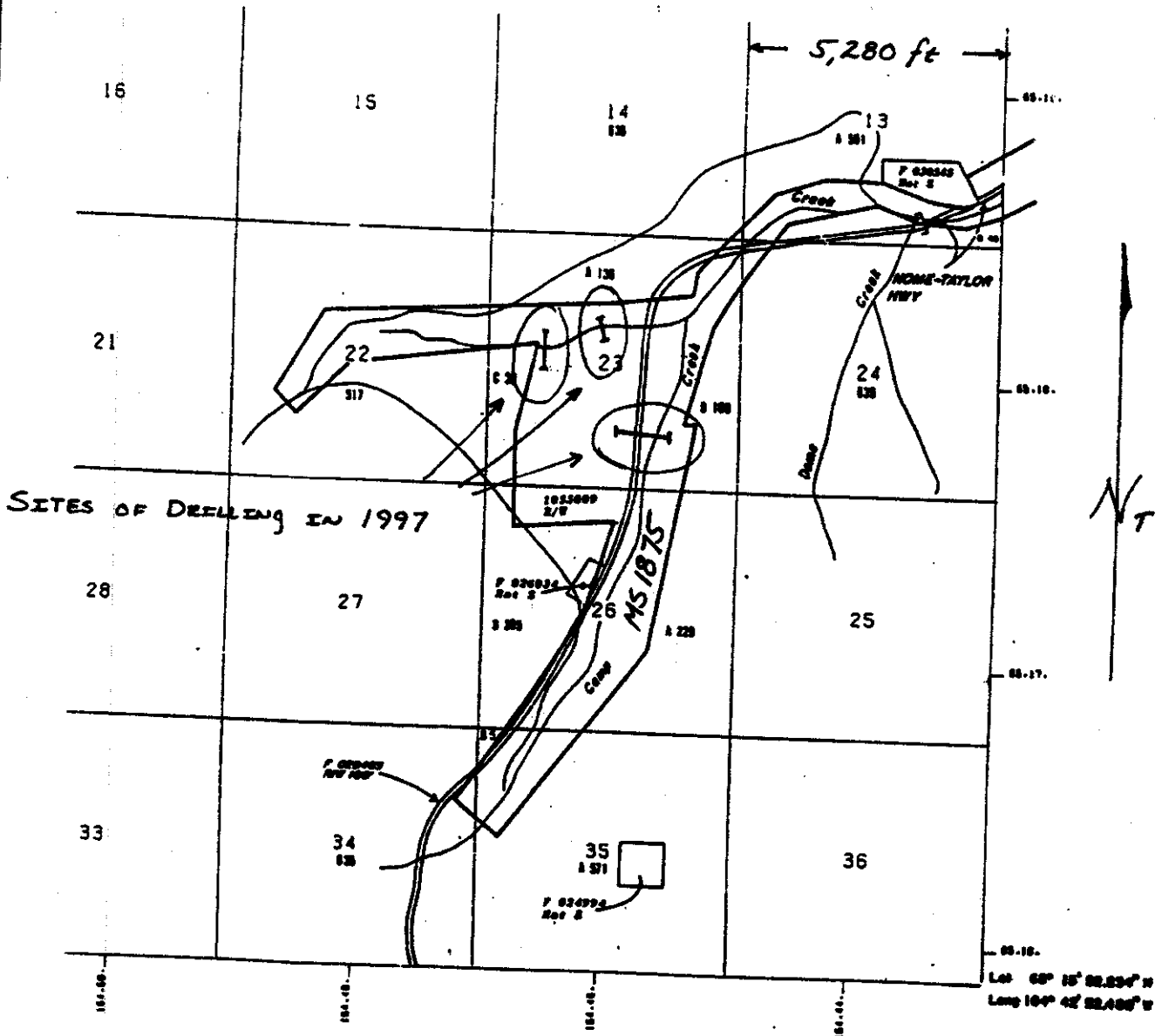
BEND. B-6 21 Nov '97

DURING JUNE OF 1997, LOHMAN MINING &
COMMERCIAL CO. DRESSED 19 SIX-INCH
DIAMETER HOLES ON MS 1875. ALL HOLES
WERE PLUGGED AND CAPPED WITH CLAY.

TOTAL DISTURBANCE ON MS 1875:

~ 0.01 AC. DESTURBED

~ 3.5 CY DISPLACED



DURING JUNE OF 1997, LONMAN MENENY & COMMERCIAL CO. DREALED 33 SIX-INCH DIAMETER HOLES ON MS 1144. ALL HOLES WERE PLUGGED AND CAPPED WITH CLAY.

TOTAL DISTURBANCE ON MS 1147:
 ~ 0.02 BC. DISTURBED
 ~ 6.0 CY DISPLACED

LONMAN MENENY & COMMERCIAL CO.
 COFFEE CREEK
 1997 DRILLING SITES ON
 MS 1147... 33 DRILL HOLES.
 APMA..F979367
 COE...B-970047
 BEND. B-6 | 21 Nov '97

