

F9490

F949067
CLAIM LOCATION/
ACCESS MAP
BENDELEBEN (B-L)

TAH8 REGIONAL

MS1875

F83109

MS2435

F64605

R30W
R29W

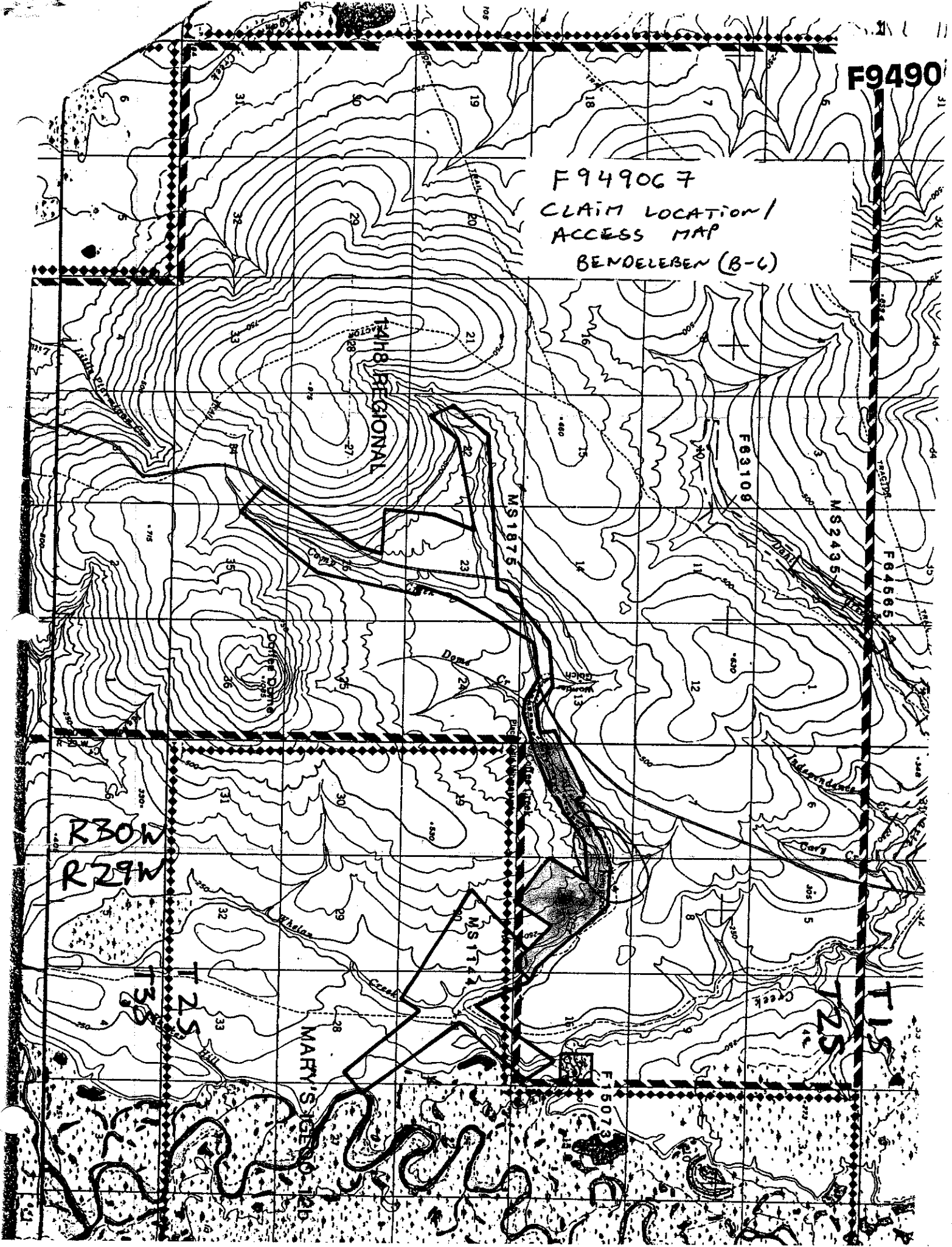
T33S
T25S

MARY'S SIEGEL LAB

MS114

F15073

T25
T15



THURMAN OIL AND MINING, INC.

COFFEE CREEK

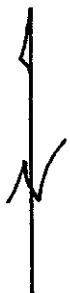
EXPLORATION PLAN

BENDELEBEN B-6

PLACER MINE

31 Aug 95

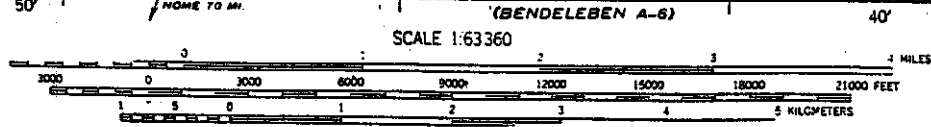
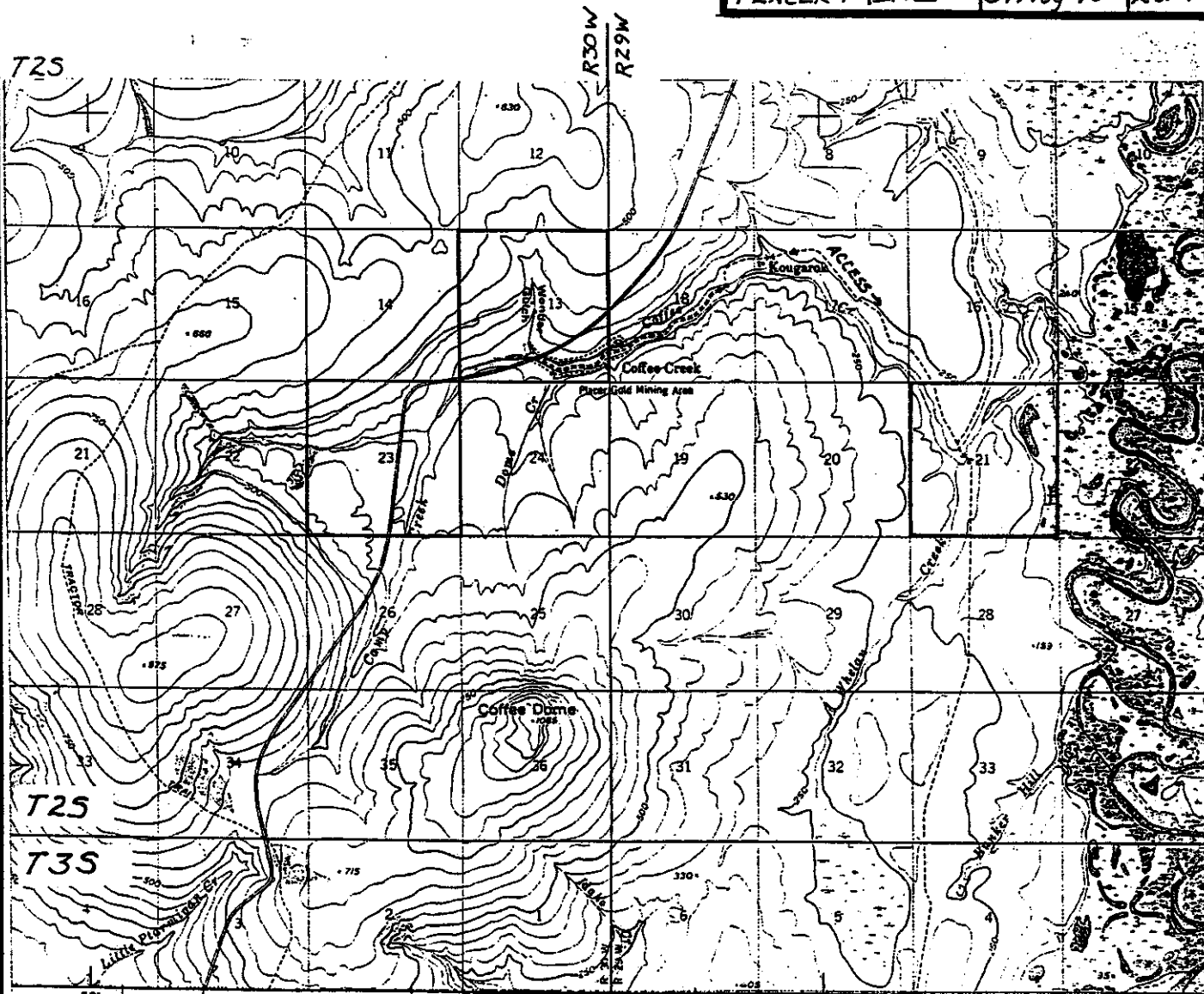
2 OF 4



AREAS OF PROPOSED ACTIVITY
ARE OUTLINED AND ARE
CONTAINED WITHIN:

T2S; R29W; S-21

T2S; R30W; S-13 & 23



RECEIVED
AUG 31 1995

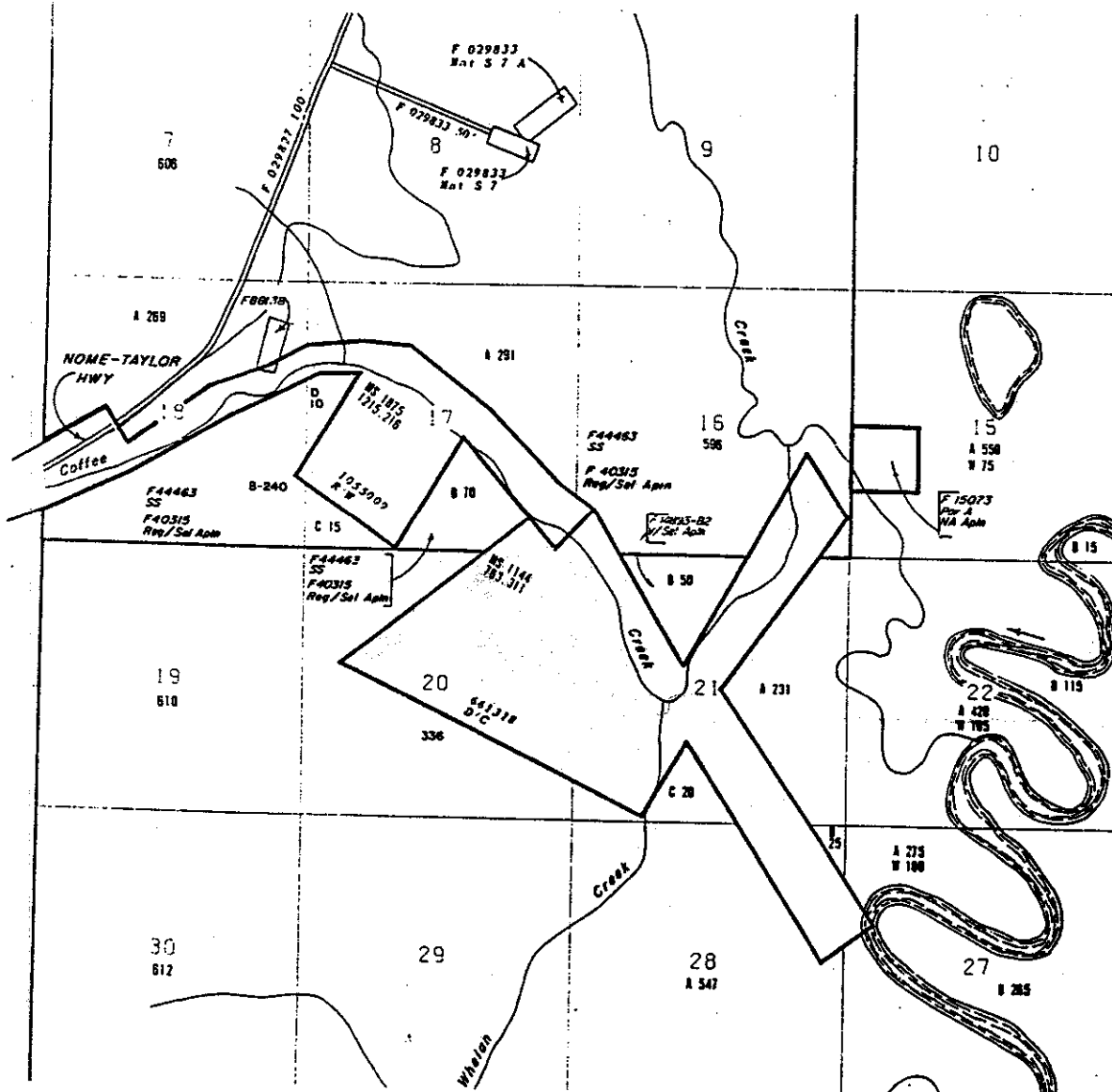
FILED DOM & W

COFFEE CREEK

LANDS OF LONMAN MINING &
COMMERCIAL, INC. INCLUDED IN
AGREEMENT DATED _____
WITH THURMAN OIL & MINING, INC.

EXHIBIT "A"

2053

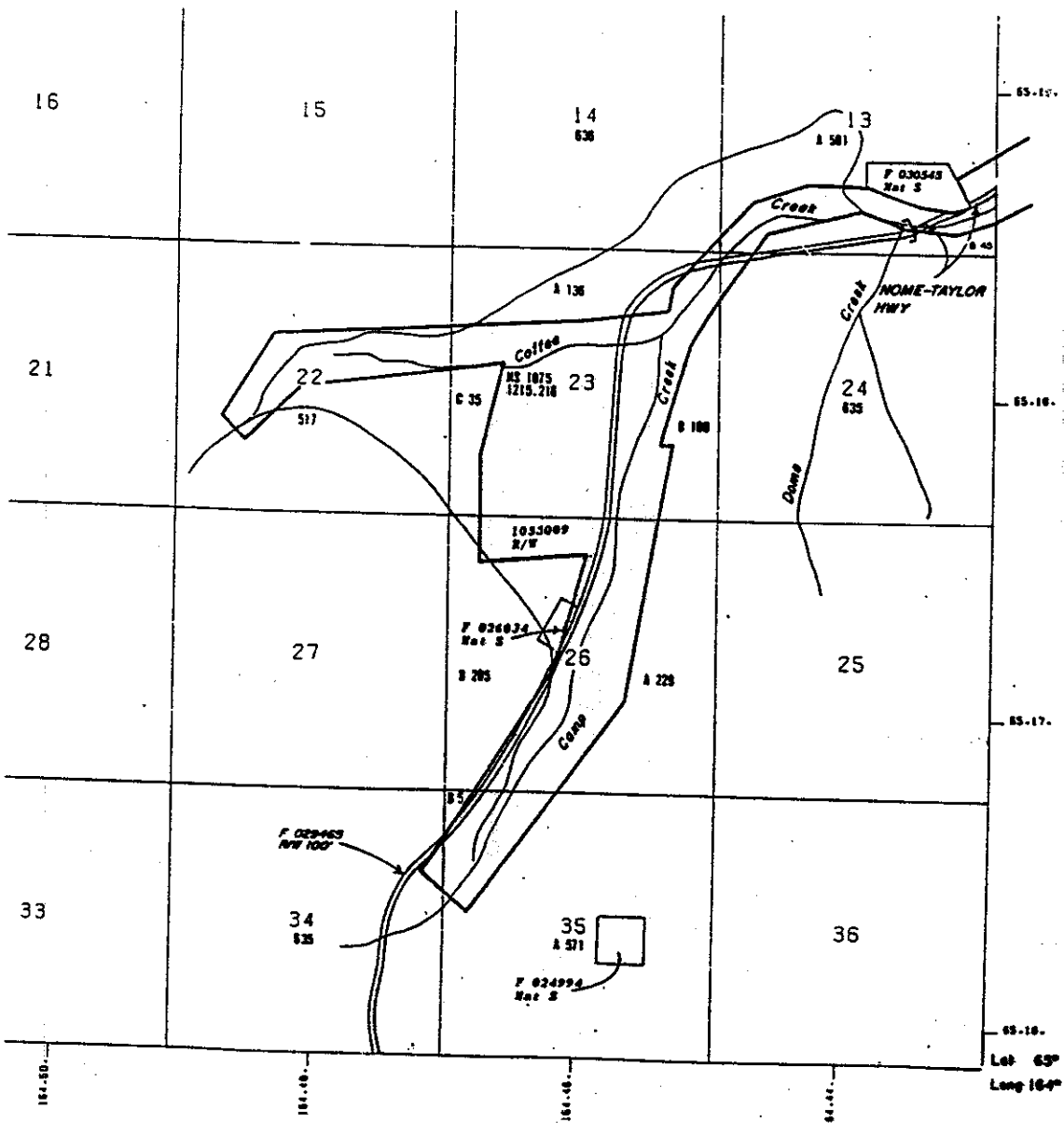


COFFEE CREEK

LANDS OF LONMAN MENING &
 COMMERCIAL, INC. INCLUDED IN
 AGREEMENT DATED _____
 WITH THURMAN OIL & MENING, INC.

EXHIBIT "A"

3 of 3



Let 63° 18' 52.834" N
 Long 164° 42' 52.488" W